

# Summary

## Knoxville Regional TPO 2050 MTP Update



## Public Outreach Round #1

February 2024

### Meeting Locations

Round #1 – Community Engagement – three (3) meetings:

1. Monday February 12, 2024 from 4-7 pm at Knoxville Area Transit Center (20+ participants)
2. Tuesday February 13, 2024 from 12-1 pm [virtual meeting via zoom](#) (16+ participants)
3. Tuesday February 13, 2024 from 4-7 pm at Blount County Library (17+ participants)

Members of the project team hosted several community events for the Mobility Plan update. Notification of these events were posted to the project website, shared via email from TPO staff to stakeholder / newsletters, and promoted by Technical Advisory Committee members to their local constituents.

### Virtual Meeting Format (12-1 pm)

Online attendees were provided with a 15-min project description of the Mobility Plan, the KRTPO region, our partners, and how their input is valuable to the planning process. Polling question using Mentimeter offered feedback opportunities, in addition to the Zoom chat box. Polling questions included:

- Name your favorite PLACES in the Knoxville area – up to five (5) locations
- Modes of travel that YOU use to move around the region (all that apply)
- Your biggest transportation issue
- What transportation topics should this plan focus on (up to two)
- Which trends may have the most impact on this region in the future
- What makes transportation more challenging (up to two)

Discussion of polling results and chat box contributions allowed for additional insights, and clarification.

### In-Person Open House Format (4-7 pm)

Open House stations allowed attendees to learn and share their insights for the Mobility Plan, notably:

- Regional Assets – attendees were asked three prompts, recording their responses on post-it notes
  - a) *Your favorite thing about this region is...*
  - b) *One thing you would fix...*
  - c) *Your life would be easier if...*
- Visioning Exercise – open-ended
  - a) *What could this region look or feel like by 2050*
- Issues Mapping Station: featuring a large-scale map of the regional roadway network
  - a) *What places you visit often (or would like to)?*
  - b) *What gets in your way?*
- Interactive Word Cloud Station – Mentimeter poll using a QR code to join
  - a) *What are your favorite places in/around this region? (up to five)*
- Mental Mapping Exercise – draw your commute to work/school, noting landmarks
- Comment Station – open-ended comments of items that we may have missed
  - a) Demographic information was voluntary, for comparison with survey participants to date

## Summary of Feedback Received – selected themes / consolidated

### Favorite things about the Knoxville / Maryville region...

- KAT service and free downtown trolley
- Parks and greenspaces / greenways / Mountains and rivers / Rural areas / Open land
- Farmers Market / Library / Zoo
- Perfect size city
- Farm lands / Small Town / Walkable downtown Maryville

### One thing I would fix...

- Better connectivity of roadways
  - Narrow roadways in rural areas
  - "Wider is not better"
- More bus service / evening and late night service
- Holistic mobility (choices) / Safe options for walking or biking / wider sidewalks / inconsistent sidewalks
  - Bikeway gaps / separated bikeways
  - More greenways / conserve wildlife / more trails south of Maryville
  - "Pedestrians are overlooked"
- Preserve open spaces, while adding density in urban areas
- Pedestrian timing of traffic signal on Magnolia (too short)
- Alcoa Highway bike lanes just end
- Kingstone Pike / fix existing roads first, no more new roads / No bypass around Maryville

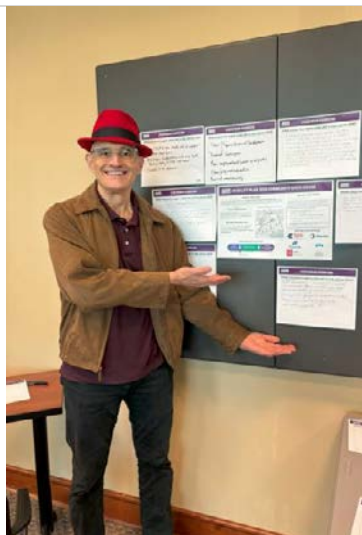
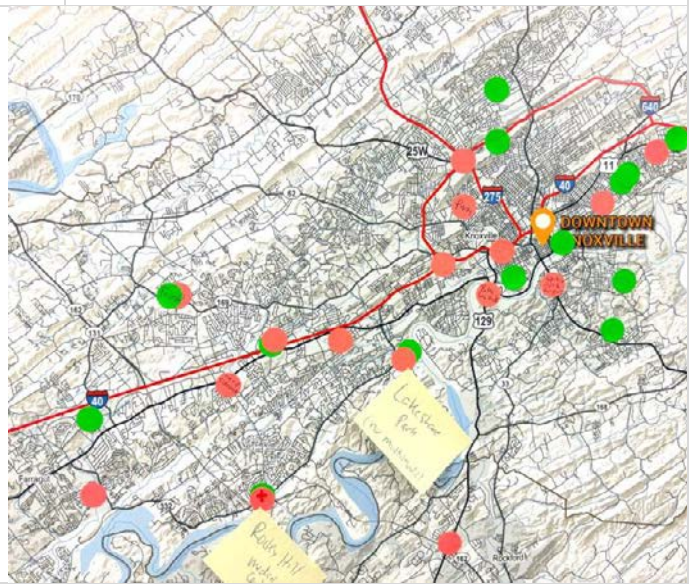
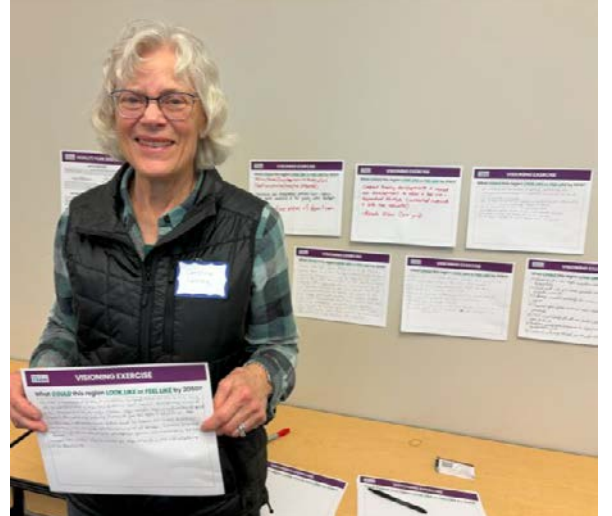
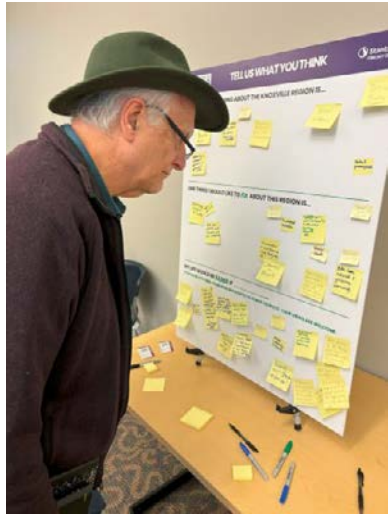
### My life would be easier if...

- Transit service later into the evening / longer hours / more frequent service / closer to my house
  - Microtransit service to existing bus lines
  - Rideshare + local shuttle buses (circulator)
- No on-street parking / more convenient on-street parking
- Connecting greenways / more trails
- Population growth was slower / more manageable
- eBikeshare program / sidewalks / bike safety bells
- Share the road
- "Fewer new residents"

### What could this Region Look Like or Feel Like by 2050

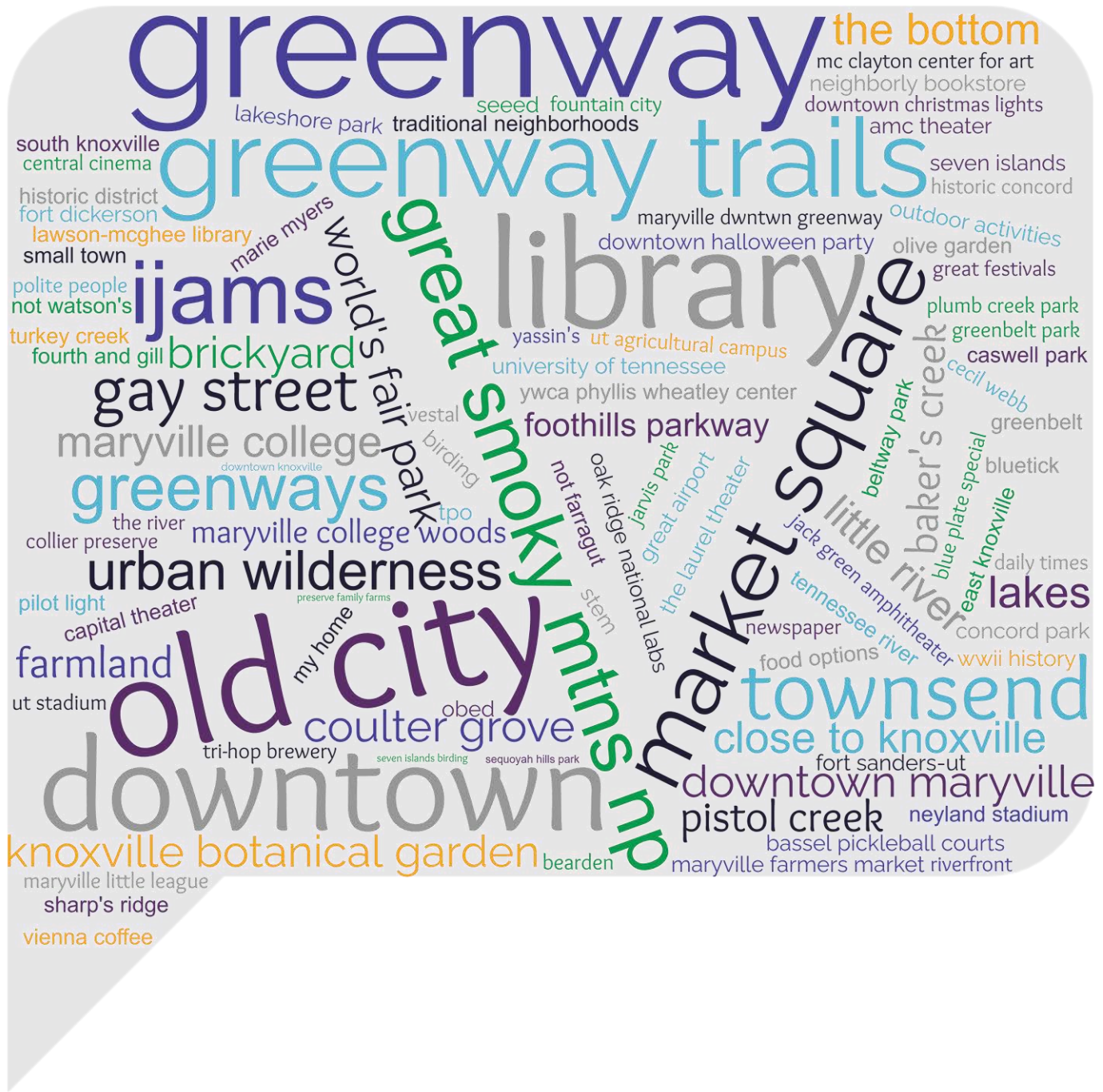
- Density of development (housing) to be more walkable / Transit oriented development
  - Housing choices / affordable housing
  - Mobility without the need for a car / Fewer cars / more transit
  - Better planning for density and walkability / less pavement
  - Avoid sprawl and office parks
  - Controlled population growth / Small Town feel / More greenspaces
- Safety: Vision Zero goals, and reducing speeds
  - Improved visibility on our roads (lighting, and reflectivity)
- Transit services: regional options, and more downtown circulator(s)
- Attractive streetscapes with more trees / shade / more greenspaces
  - More sidewalks
  - Balance of open spaces, housing, parks, and roadways / Outdoor living!
- Community belongingness, and happy citizens / slower growth rates
- Complete the highway projects: I-75/40 connector; Pellissippi Parkway I-140 extension
- Air quality improvements / alternative fuels / electric school buses
  - Solar panels within parking lots
  - Protect the environment
- Bikeways, especially separated from cars
  - Bike repair / maintenance stations

Example Photos from Open House Events



Interactive Word Cloud – *What are your favorite places in the region?*

Composite of all three meetings: 176 contributions



**ATTACHMENTS**

- Virtual Open House Results (slides) – PDF
- Visioning Exercise – What could this region look or feel like by 2050 – PDF
- Mental Mapping Exercise – Draw your commute to work/school from memory - PDF
- Comment Cards - PDF
- Comment Cards – Demographics summary – PDF

Stay involved - Project website: [www.KnoxMobility.org](http://www.KnoxMobility.org)

# MOBILITYPLAN



## Knoxville TPO 2050 MTP Update

Community **Virtual** Open House – Lunch & Learn  
Tuesday, February 13, 2024

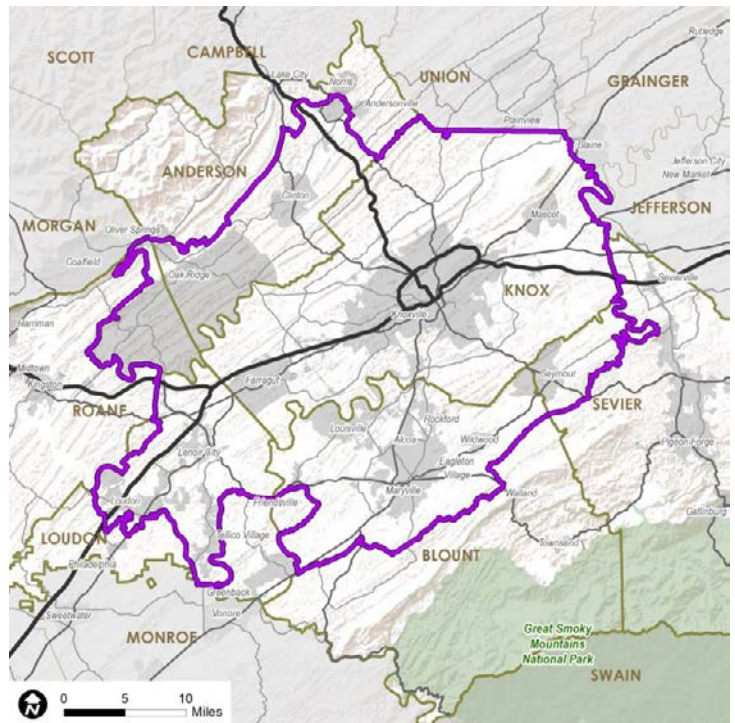
1

### Who is this plan?



### Knoxville TPO

- Amy Brooks**  
[Amy.brooks@knoxplanning.org](mailto:Amy.brooks@knoxplanning.org)
- Mike Conger**  
[mike.conger@knoxplanning.org](mailto:mike.conger@knoxplanning.org)
- Craig Luebke**  
[Craig.Luebke@knoxplanning.org](mailto:Craig.Luebke@knoxplanning.org)
- Doug Burton**  
[Doug.burton@knoxplanning.org](mailto:Doug.burton@knoxplanning.org)
- Ally Ketron**  
[Ally.Ketron@knoxplanning.org](mailto:Ally.Ketron@knoxplanning.org)



2

# Project Teammates



3

## Today's Topics

1. **What is this Plan?**
2. **What do we (think we) know?**
3. **Tell us about...** [Polling]
4. **How to stay connected**

Visit [www.Menti.com](http://www.Menti.com)

- Use code **5607 5575**
- or take a photo of this QR code



Name your favorite PLACES in the Knoxville area

MOBILITYPLAN 2050

4

## Metropolitan Transportation Plan is...

- **Federally-required:** all TPOs must do this every ~4 years!
- **Long-range:** 20+ years
- **Multimodal:** walking + biking + transit
- **Fiscally-constrained:** based on cost-effectiveness and needs
- Representation of **YOUR** local goals / needs

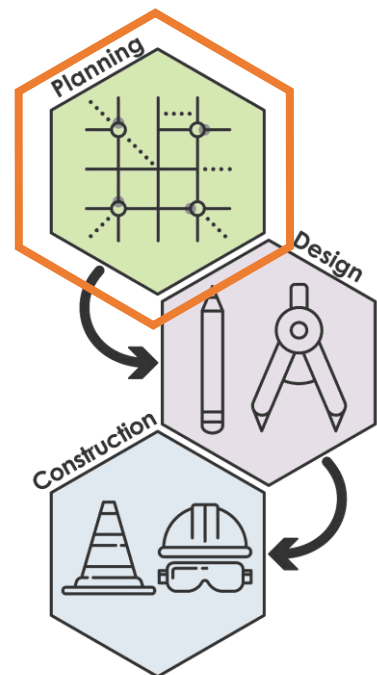


MOBILITYPLAN 2050

5

## Why Long-range Planning?

- “30,000-foot viewpoint”
- First of many steps
- Vision for the future - Be bold!
- Prioritize needs
- **Step 1** in 3-step process →



MOBILITYPLAN 2050

6

# Why are YOU here?

- Validate issues
- Identify problem areas or corridors
- Guide multimodal recommendations
- Suggest priorities

MOBILITYPLAN 2050

7

8

# General Timeline



**20+ month time frame**

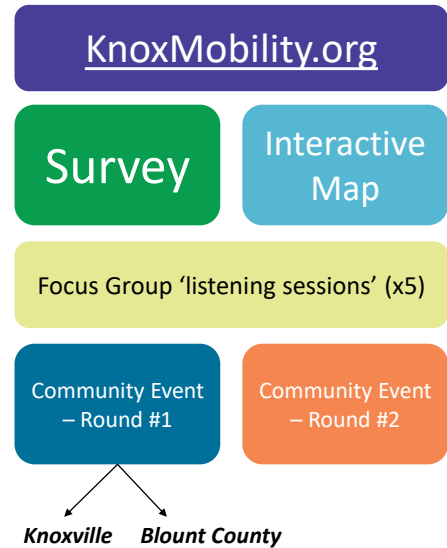
MOBILITYPLAN 2050

8



## Outreach to date

- **3,280+** e-newsletter recipients
- **690+** survey participants
- **330+** point of interest added
- **84** focus group participants
- Three (3) Community Events this week:
  - Monday evening 4-7 pm
  - Tuesday afternoon *virtual* 12-1 pm
  - Tuesday evening 4-7 pm



MOBILITYPLAN 2050

9

## Today's Topics

1. *What is this Plan?*
2. *What do we (think we) know?*
3. ***Tell us about...*** [Polling]
4. *How to stay connected*

MOBILITYPLAN 2050

11



# Cultural Amenities



Music Scene (Bluegrass, Country)



University of Tennessee, Knoxville  
• Education & employment



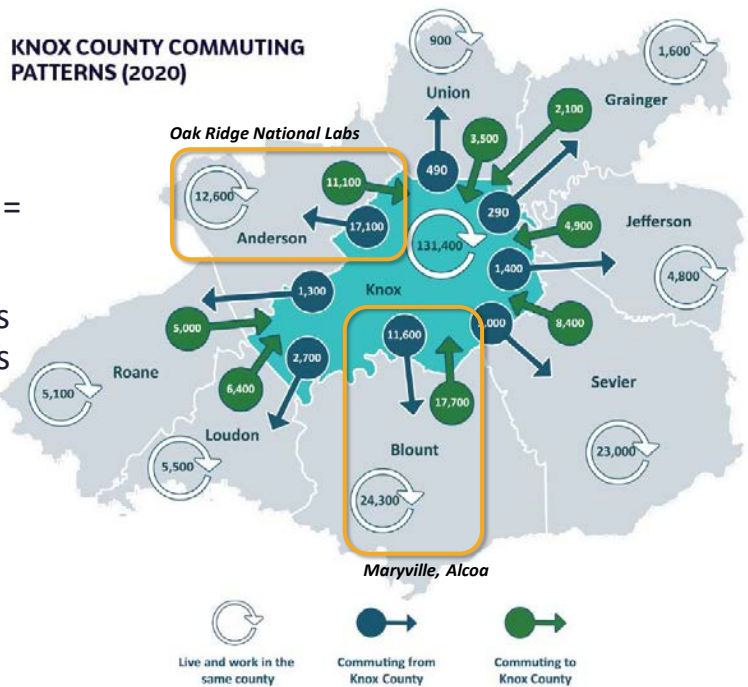
Great Smoky Mountains / Recreation



## MOBILITYPLAN 2050

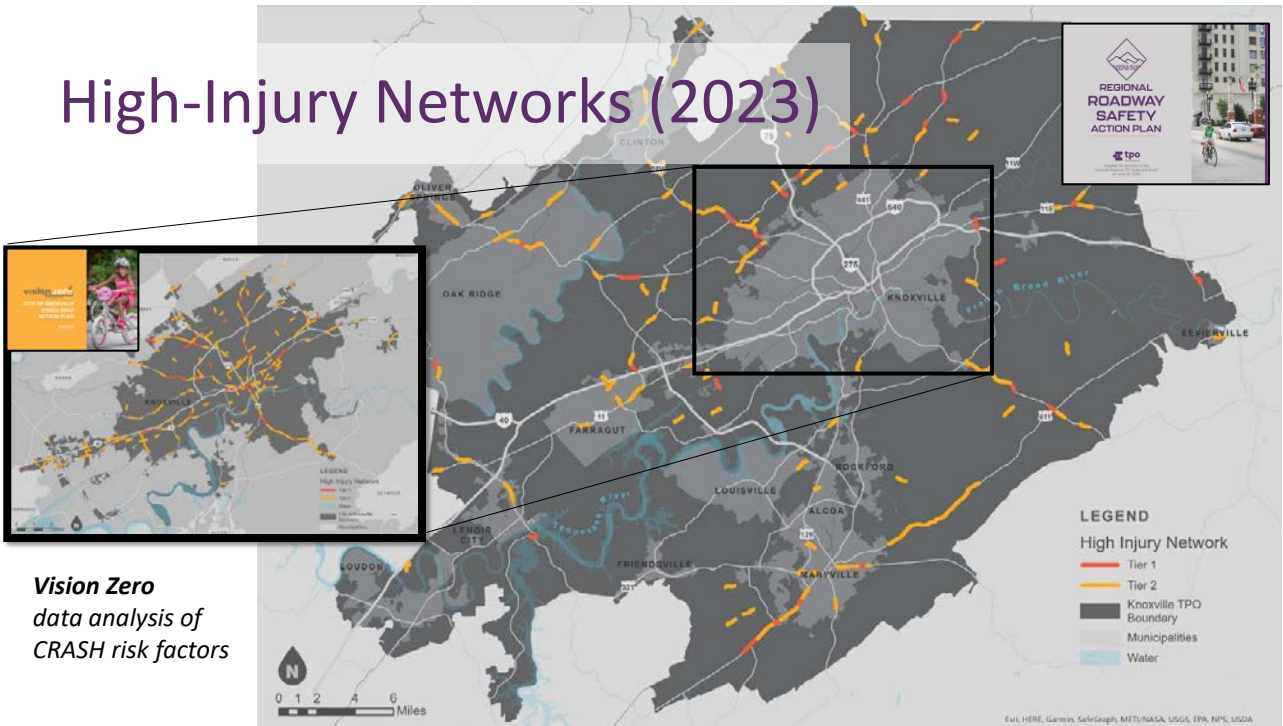
12

- Daytime population swell = **workday commuters**
- Anderson, Blount counties are also employment hubs



14

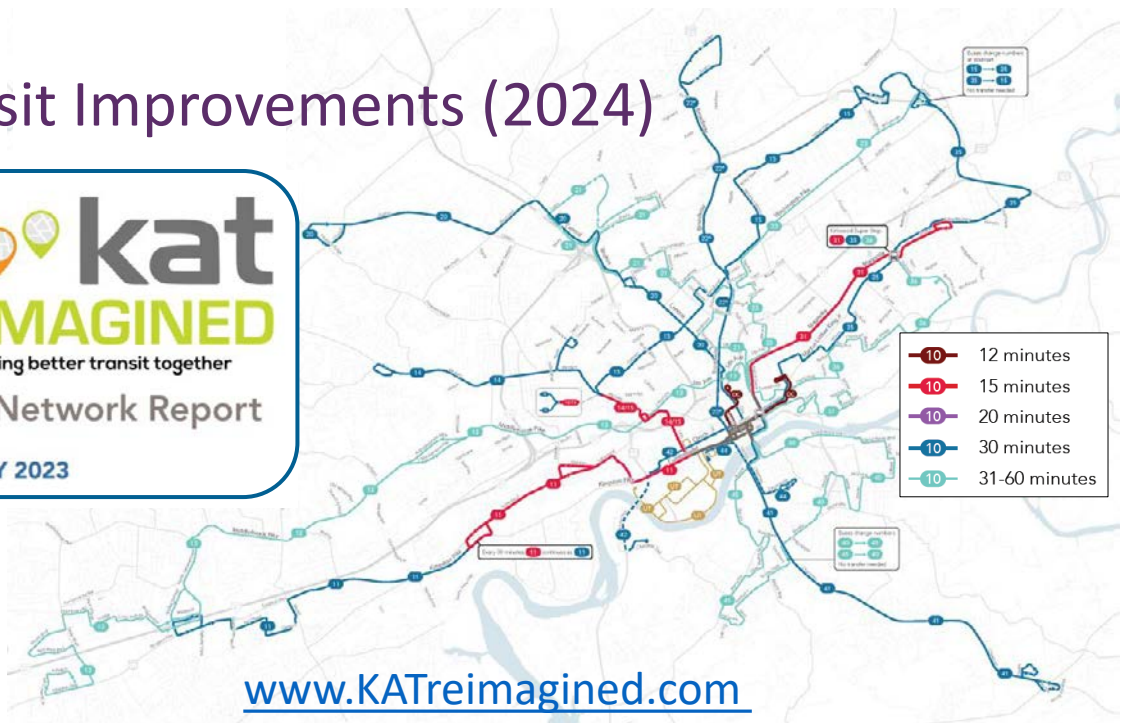
# High-Injury Networks (2023)



*Vision Zero data analysis of CRASH risk factors*

# Transit Improvements (2024)

**kat**  
**REIMAGINED**  
 designing better transit together  
 Draft Network Report  
 JANUARY 2023



# Today's Topics

1. *What is this Plan?*
2. *What do we (think we) know?*
3. **Tell us about...** [Polling]
4. *How to stay connected*

Visit [www.Menti.com](http://www.Menti.com)

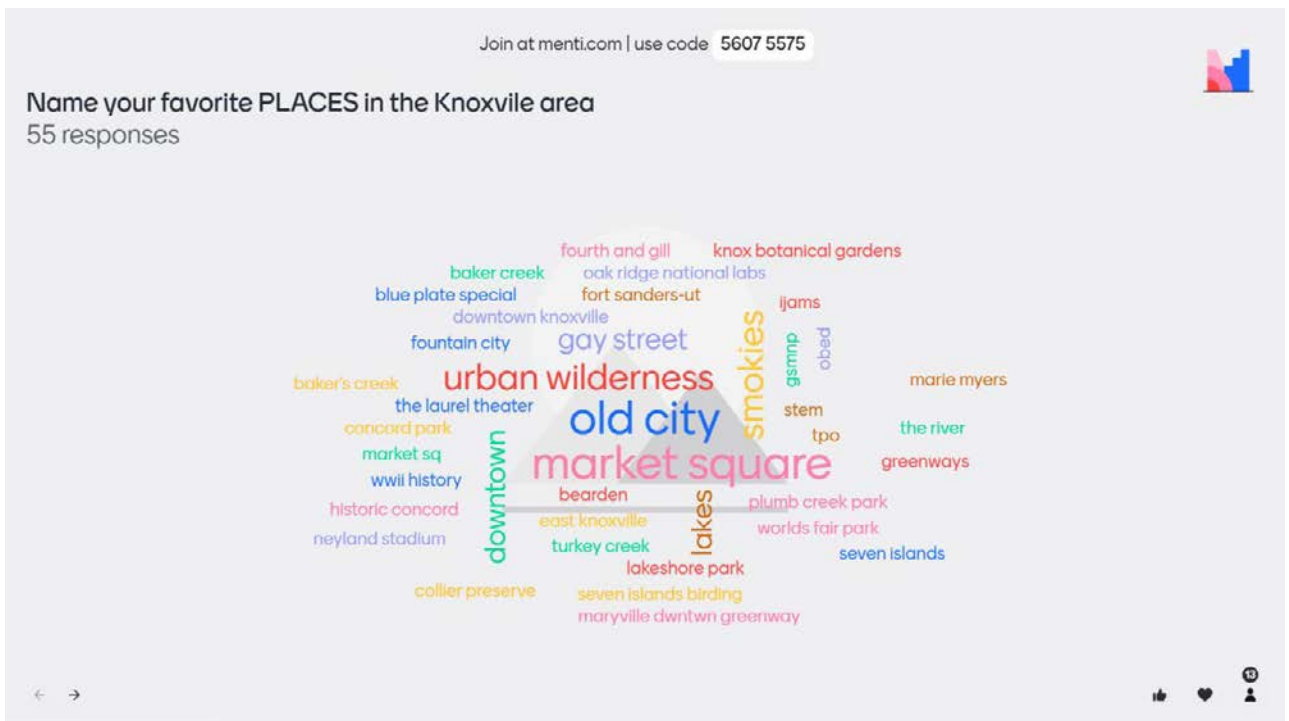
- Use code **5607 5575**
- Or take a photo of this QR code



Name your favorite PLACES in the Knoxville area

## MOBILITYPLAN 2050

18



19

Join at menti.com | use code 5607 5575



# Q1: How do YOU move around this region? (check all that apply)

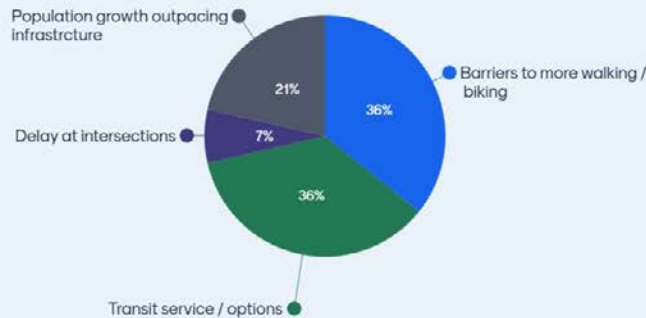


20

Join at menti.com | use code 5607 5575



# Q2: What is YOUR biggest transportation ISSUE? (choose 1)

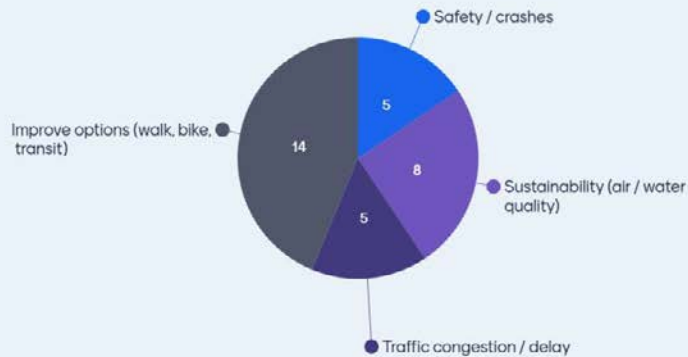


21

Join at menti.com | use code 5607 5575



### Q3: What topics are MOST important to focus on? (choose 2)



← →



22

Join at menti.com | use code 5607 5575



### Q4: Which trend has the most IMPACT on this region's transportation future? (choose 1)



← →

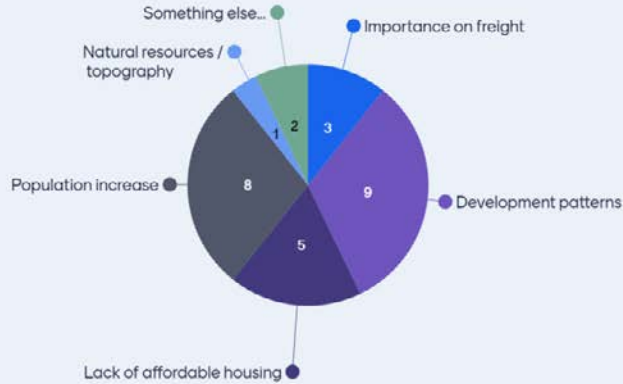


23

Join at menti.com | use code 5607 5575



## Q5: What makes transportation MORE CHALLENGING? (choose 2)



← →



24

## Today's Topics

1. *What is this Plan?*
2. *What do we (think we) know?*
3. ***Tell us about...*** [Polling]
4. ***How to stay connected***

MOBILITYPLAN 2050

26

# How to Stay Connected

- [www.KnoxMobility.org](http://www.KnoxMobility.org)
- Feedback tab

## THANK YOU!

MOBILITYPLAN 2050

MOBILITYPLAN 2050

### Public Feedback

Your input is an essential element of this process. Help us out by visiting the links below, and please share them so your friends and neighbors can also contribute.

### Survey

We want to hear from you about what you would like to see for the future of transportation within the Knoxville region. Take the survey and share the link with your friends and neighbors! Mobility Plan 2050 Survey! The project survey is confidential and participation is voluntary. The answers you provide will be collected and aggregated. Survey results will be shared here, during public meetings, and in the resulting final plan.

[Survey](#)

### Map

Visit the map to leave comments and suggestions for the Mobility Plan website. You will be able to make comments directly on the map by zooming into areas, streets, or specific intersections. This provides valuable feedback that is linked directly to locations in our study area. If you leave a comment early in the planning process, be sure to visit it again to see how the map grows over time!

[Interactive Map](#)

Mobility Plan 2050



## VISIONING EXERCISE

What **COULD** this region **LOOK LIKE** or **FEEL LIKE** by 2050?

Easy walkability <sup>& biking</sup> via sidewalks, safe crossings, shade, etc  
within the city + between cities of Mayville + Alcoa

Less traffic congestion. Decrease size of intersections - maybe  
more roundabouts. Option for park-n-ride if  
traveling from Blount Co to Knoxville.

More green space both for walkers/bikers + car drivers.  
Perhaps wider sidewalks w/ more trees  
divided streets w/ boulevards / central trees in median

Central place that is in downtown like  
Founders Square that has connectiveness radiating  
out to make it easy for people to access.

## VISIONING EXERCISE

What **COULD** this region **LOOK LIKE** or **FEEL LIKE** by 2050?

Slow down development to maintain  
more of the small town atmosphere

## VISIONING EXERCISE

What **COULD** this region **LOOK LIKE** or **FEEL LIKE** by 2050?

A balance between open spaces, outdoor gathering spaces, greenspaces + traffic + housing/buildings. Avoid excess buildings + concrete! Any new development needs to incorporate walking/wheelchair movement/access. sort of similar to Fussgänger zones in Germany where parking is outside of development + to allow for walking within the development.

## VISIONING EXERCISE

What **COULD** this region **LOOK LIKE** or **FEEL LIKE** by 2050?

Node / Transit Oriented Development  
"Protected" Greenspace  
More neighborhood/comm. scale parks  
More required sidewalks  
Required connectivity.

## VISIONING EXERCISE

What **COULD** this region **LOOK LIKE** or **FEEL LIKE** by 2050?

- MOVE I-75/I-40 THRU TRAFFIC OFF OF CURRENT I-75/I-40 ROAD SPACE.
- PELLISSIPPI INTERSECTION WITH I-40 TRAFFIC BACK-UP DAILY 4-7 PM EASTBOUND.
- COMPLETE I-140 EXTENSION.

T.S.

## VISIONING EXERCISE

What **COULD** this region **LOOK LIKE** or **FEEL LIKE** by 2050?

Fewer cars — some mass transit  
More walkability + bicycles  
With better planning, we could have neighborhood nodes that connect with towns, schools, shopping, etc without destroying trees and green space.  
Less pavement. More natural spaces

## VISIONING EXERCISE

What **COULD** this region **LOOK LIKE** or **FEEL LIKE** by 2050?

More development in downtown planville, also more developed areas around business parkway & topside road

GROWTH IN EAST CROOK COUNTY

Additional greenways in Blount County connecting to Blount County

→ greenways in Blount & Macon

## VISIONING EXERCISE

What **COULD** this region **LOOK LIKE** or **FEEL LIKE** by 2050?

- More Greenspace - Controlled Growth.
- Upgrade current Roads
- Protect Environment.

## VISIONING EXERCISE

What **COULD** this region **LOOK LIKE** or **FEEL LIKE** by 2050?

<sup>Easy to reach</sup>  
Dense development / redevelopment in existing municipal centers ~~and~~ low density / natural spaces that can be reached by mass / shared transit.

Avoid sprawl, office parks, residential cul-de-sacs.  
Plenty of services, retail, etc in dense centers,  
calm + nature everywhere else.

## VISIONING EXERCISE

What **COULD** this region **LOOK LIKE** or **FEEL LIKE** by 2050?

By 2050, our region could be a leader in how to effectively balance development and commerce with <sup>the</sup> rural economy and agriculture. Blount County could invest in protecting agricultural zones, create incentives for retiring farmers to sell to younger farmers ~~instead~~ instead of developers, and adopt a "fix it first" philosophy about our roads and highways instead of insisting that ~~all~~ new roads are better. This region could be a leader for the State of Tennessee, which has agriculture on the state seal, along with commerce. In 2050, we could have smart growth and farmland and conservation easements for all to enjoy. We could see the end of the push for the Mississippi Parkway Extension.

## VISIONING EXERCISE

What **COULD** this region **LOOK LIKE** or **FEEL LIKE** by 2050?

More greenspace — loss roads

## VISIONING EXERCISE

What **COULD** this region **LOOK LIKE** or **FEEL LIKE** by 2050?

- Better transit
- Accessible sidewalks and street housing.
- Down town development.
- Greenway trails.
- Hotels.
- Parks.
- Local festivals.
- College / Education development

## VISIONING EXERCISE

What **COULD** this region **LOOK LIKE** or **FEEL LIKE** by 2050?

- \* Cleaner air from less traffic congestion/idling & more electric/active transportation
- \* Streets with safe speed limits, protected bike lanes, & unbroken, connected sidewalks
- \* A thriving, accessible community led micro-mobility system for each region
- \* Preserved open spaces, increased urban tree canopy, expanded greenways
- \* EVSE compatibility for all new builds & fully electric fleets for buses, trucks, etc
- \* Workforce development programs to help funnel youth into green transportation jobs
- \* Increased autonomy through greater, safe transportation options

## VISIONING EXERCISE

What **COULD** this region **LOOK LIKE** or **FEEL LIKE** by 2050?

- Light rail/express bus from downtown to Gatlinburg, airport & Cades Cove
- cohesive greenway network designed for transportation as much as or more than for recreation
- limit through traffic in downtown
- better utilization of riverfronts for aesthetic & recreational benefits (publicly owned)
- rail access to Nashville, Chattanooga, Atlanta via Amtrak
- kids feel safe and have fun while walking & biking to school!
- infill development supports walkable, bikeable, transit accessible communities
- government prioritizes local lifestyles over tourist experience
- cost of living is accessible for service industry workers, teachers, etc.

## VISIONING EXERCISE

What **COULD** this region **LOOK LIKE** or **FEEL LIKE** by 2050?

- It could smell better because nobody's burning gasoline.
- It could have extensive downtown tree canopy.
- It could have a large downtown area that's car free.
- It could have electric school buses.
- It could have heat reflecting pavement on major streets.
- It could have protected bike lanes all over town.
- It could have a bicycle freeway.
- It could have EVSE at all the movie theatres + concert venues.
- It could require permeable pavement + solar canopies in all parking lots.

## VISIONING EXERCISE

What **COULD** this region **LOOK LIKE** or **FEEL LIKE** by 2050?

Compact housing developments + mixed use development to allow a less car-dependant lifestyle (connected sidewalk + bike lane networks)

- Reach Vision Zero goals



## VISIONING EXERCISE

What **COULD** this region **LOOK LIKE** or **FEEL LIKE** by 2050?

Train/Tram from ~~here~~ here to Nashville + Chattanooga (maybe Atlanta)

intentional bike transportation: protected lanes, signage, speed limits conducive to the growing active transport community

Big car-free areas of downtown.

## VISIONING EXERCISE

What **COULD** this region **LOOK LIKE** or **FEEL LIKE** by 2050?

⇒ pedestrianized areas downtown + other dense neighborhoods

⇒ light rail + buses connecting all parts of Knoxville + access to surrounding towns + GSMNP

⇒ protected bike lanes / bike routes through all neighborhoods connecting parks, stores, nightlife, etc.

⇒ revival of trams downtown + Happy Holler

⇒ Henley Street converted to green space for an expansion of World's Fair Park

⇒ bike maintenance stations + charging for e-scooters + e-bikes

⇒ affordable housing so people can live in the same neighborhood that they work

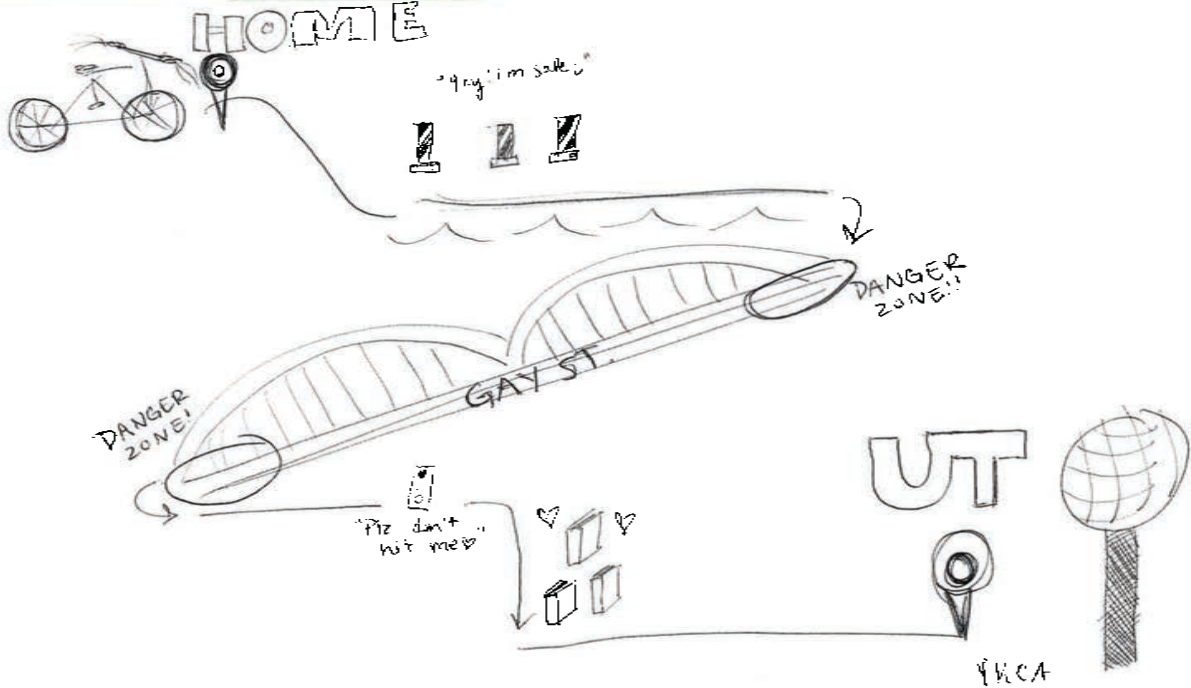
What **COULD** this region **LOOK LIKE** or **FEEL LIKE** by 2050?

We live in beautiful place + weather is good most of the time but we spend too much time inside → our cars, houses, buildings → need better accessibility to safe places, safe roads, safe neighborhoods and schools by walking, biking, transit for all ages + abilities.

Our zoning + development codes need to focus on more diverse housing with mixed retail/commercial areas. Schools should be in neighborhoods where children from elementary to high school can walk + bike to school on safe streets with sidewalks + bike facilities

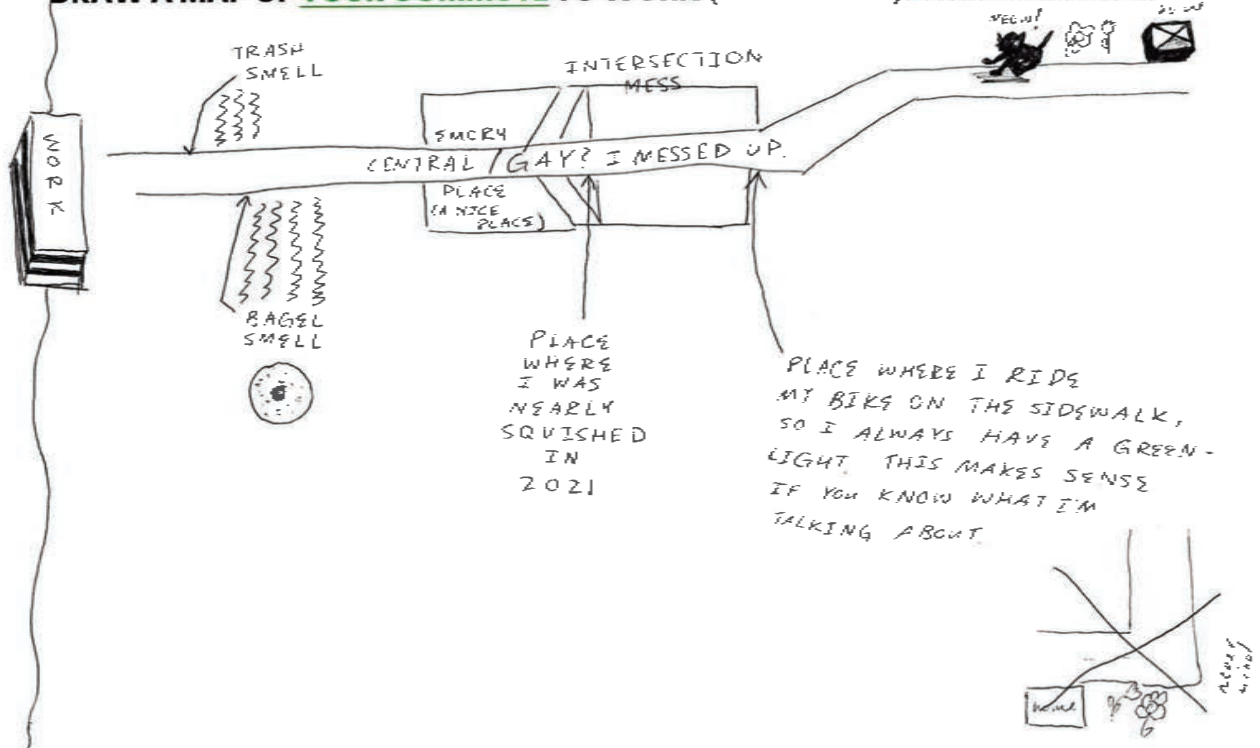
# MENTAL MAPPING EXERCISE

DRAW A MAP OF YOUR COMMUTE TO WORK (OR SCHOOL) FROM MEMORY.



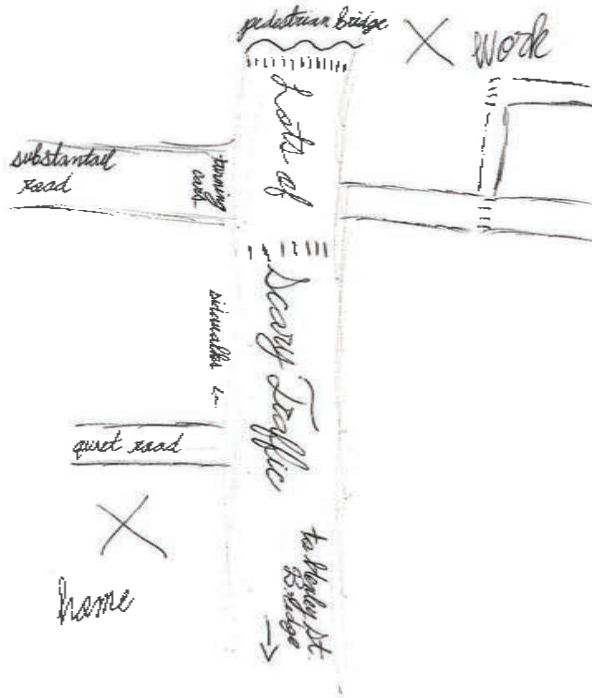
# MENTAL MAPPING EXERCISE

DRAW A MAP OF YOUR COMMUTE TO WORK (OR SCHOOL) FROM MEMORY.



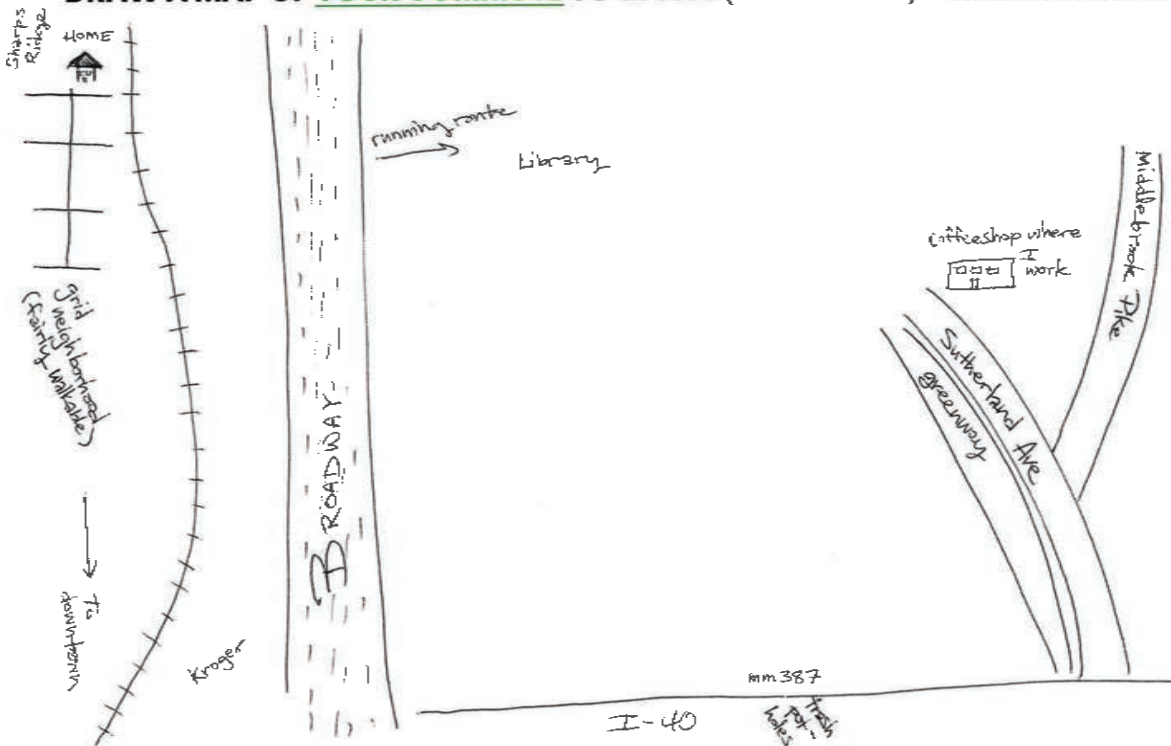
# MENTAL MAPPING EXERCISE

DRAW A MAP OF YOUR COMMUTE TO WORK (OR SCHOOL) FROM MEMORY.



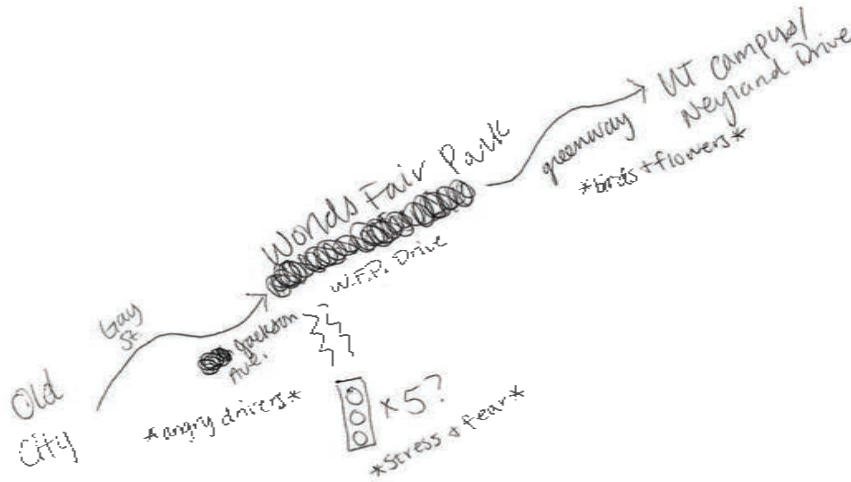
# MENTAL MAPPING EXERCISE

DRAW A MAP OF YOUR COMMUTE TO WORK (OR SCHOOL) FROM MEMORY.



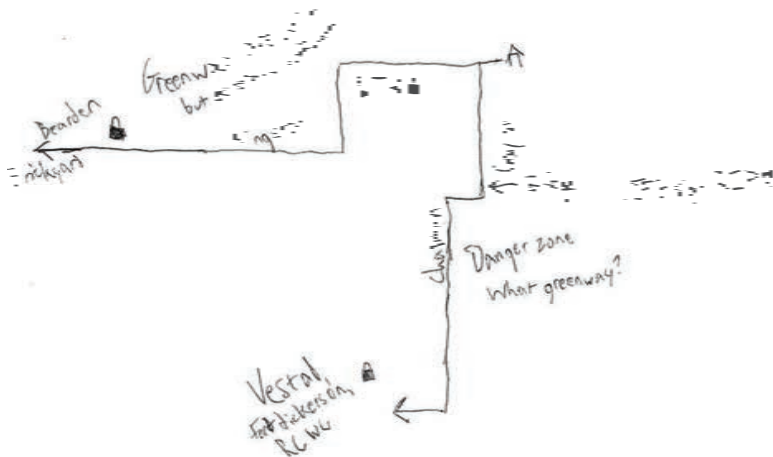
# MENTAL MAPPING EXERCISE

DRAW A MAP OF YOUR COMMUTE TO WORK (OR SCHOOL) FROM MEMORY.



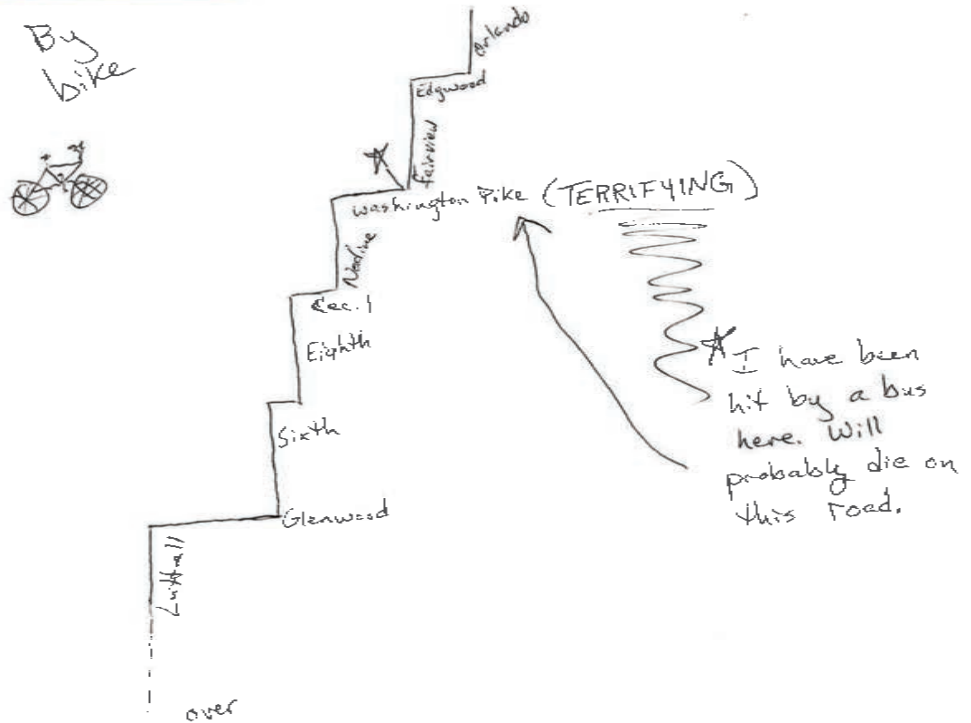
# MENTAL MAPPING EXERCISE

DRAW A MAP OF YOUR COMMUTE TO WORK (OR SCHOOL) FROM MEMORY.



# MENTAL MAPPING EXERCISE

DRAW A MAP OF YOUR COMMUTE TO WORK (OR SCHOOL) FROM MEMORY.



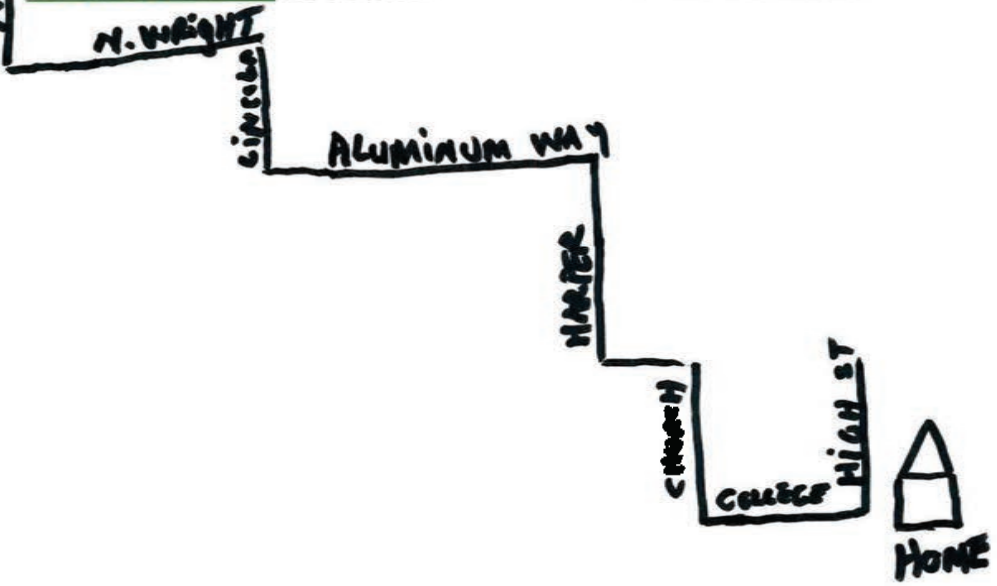
Work →

# MENTAL MAPPING EXERCISE

DRAW A MAP OF YOUR COMMUTE TO WORK (OR SCHOOL) FROM MEMORY.

Alice

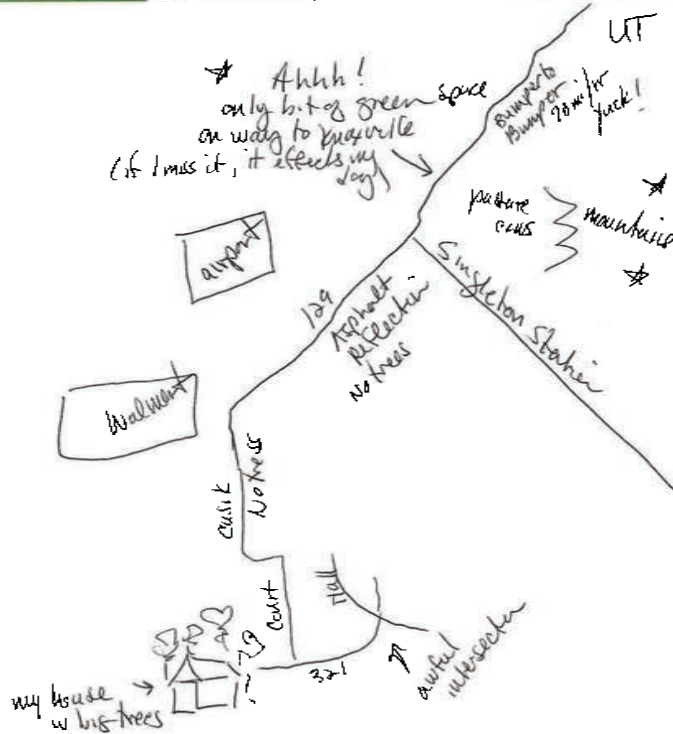
ADAPTIVE



Mary Vile

# MENTAL MAPPING EXERCISE

DRAW A MAP OF YOUR COMMUTE TO WORK (OR SCHOOL) FROM MEMORY.



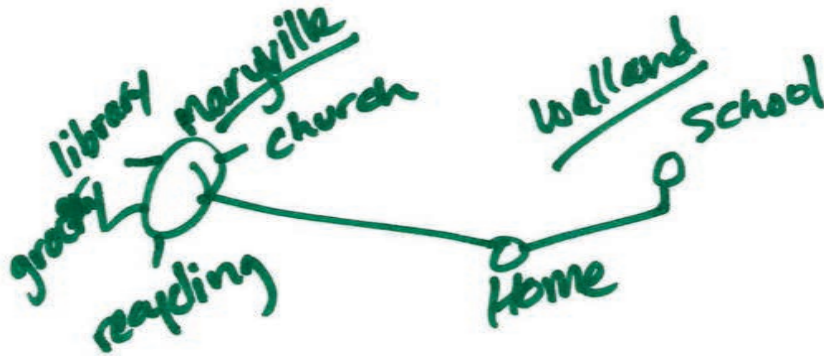
# MENTAL MAPPING EXERCISE

DRAW A MAP OF YOUR COMMUTE TO WORK (OR SCHOOL) FROM MEMORY.



# MENTAL MAPPING EXERCISE

DRAW A MAP OF YOUR COMMUTE TO WORK (OR SCHOOL) FROM MEMORY.





# COMMENT CARD



**Is there something we missed here today? Write it here!**

Thank you so much. Appreciate you asking

*(demographic questions on the back)*

# COMMENT CARD



**Is there something we missed here today? Write it here!**

You did a great job!

*(demographic questions on the back)*

## COMMENT CARD



Is there something we missed here today? Write it here!

Free food

(demographic questions on the back)

## COMMENT CARD



Is there something we missed here today? Write it here!

I would like to see more alignment with the Comprehensive Land Use & Transportation Plan that is happening in Blount County, GA. How does this process dovetail into that one? There's a lot of plans, but it would be great to see how they connect - or could connect.

(demographic questions on the back)

# COMMENT CARD



**Is there something we missed here today? Write it here!**

QUESTIONS ON OR ABOUT PELLISSIPPI PARKWAY EXTENSION - TOURISM

(demographic questions on the back)

# COMMENT CARD



**Is there something we missed here today? Write it here!**

We hope the proposed Pellissippi Parkway Extension is re-thought and never built. We do not need a highway like that going nowhere in the valley of our Little River. We need improvements to our existing road ~~network~~ network instead. Alcoa Highway is getting some help (thank you) but Chapman Hwy is very dangerous. Old US 411 is too busy + congested everywhere in Blount Co. The older + smaller roads are in need of maintenance

(demographic questions on the back)

## COMMENT CARD



**Is there something we missed here today? Write it here!**

I would love more greenways, bicycle lanes, SIDEWALKS in our community! This is a great alternative to cars. However as I age I realize these modes will not be something I will be able to use. Eventually not even driving. I have learned about micro-transit in other cities. M-T. can pick a person up at home or a nearby stop. Then take them to a bus line or another destination. As our population ages this is needed. It's also needed since buses can't get to many parts of Knoxville, don't run at certain times. Families + individuals would have more access to doctors, shopping, entertainment than they do now.

(demographic questions on the back)

## COMMENT CARD



**Is there something we missed here today? Write it here!**

A bigger map would be nice for pointing out specific areas/roads

(demographic questions on the back)

COMMENT CARD



Is there something we missed here today? Write it here!

Need more Sidewalks . I live off of Westhills on a dead end block and trying to walk is ~~risky because~~ more than my block is risky because there are no sidewalks and I have to walk in people's yards when a car comes by

(demographic questions on the back)

COMMENT CARD



Is there something we missed here today? Write it here!

I will be moving to First Creek Apts.

will there be a bus ~~route~~ running in that area

They are down from Summit Hill. ~~50PPE~~

(demographic questions on the back)

**Knoxville Mobility Plan - Community Engagement - Round #1**

Comment Card Demographics

Feb-24

**14 Comment cards received**

**How did you hear about this meeting?**

7	Email
6	Word of mouth
2	Newspaper
1	Family
<b>16</b>	

**How long have you lived within Eastern TN**

-	0%	<1 year
-	0%	1-5 years
3	21%	6-10 years
2	14%	11-19 years
9	64%	20+ years
<b>14</b>		

**What is your approximate age category**

1	7%	18 years or younger
3	21%	19 - 29 years
	0%	30 - 39 years
1	7%	40 - 49 years
1	7%	50 - 59 years
8	57%	60 year or older
<b>14</b>		

**What is the Zip code where you...**

LIVE			WORK or SCHOOL		
	Location			Location	
4	37804	Maryville east	3	37801	Maryville southwest
2	37803	Maryville south	1	37092	La Vergne
2	37915	Knoxville	1	37804	Maryville east
2	37917	Knoxville north	1	37886	Maryville east
1	37772	Loudon County	1	37915	Knoxville east
1	37886	Maryville east	1	37996	Knoxville
1	37902	Knoxville	6		Retired
1	37909	Knoxville west			

**What best describes your race / ethnicity**

12	86%	White / European descent
2	14%	Black / African descent
	0%	Native Hawaiian / Pacific islander
	0%	Native American / American Indian
	0%	Asian / Middle Eastern
	0%	Hispanic / Latino / Latinx
	0%	Other(s)
<b>14</b>		